

Kempsford

(with Whelford, Dunfield and Dudgrove)

Parish Newsletter

October 2023

Gifts & More Craft Fair

Kempsford Village Hall

Saturday 4th November

Opens 10.30am

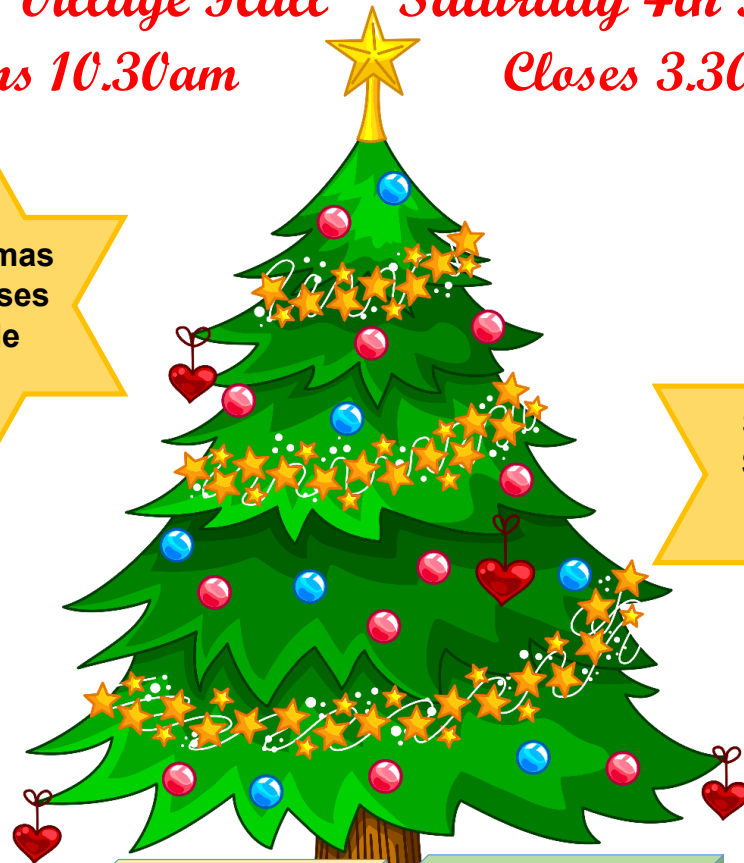
Closes 3.30pm



**Christmas
Surprises
Raffle**



**Sweet &
Savoury
Café**



Angel Libra Designs
Jewellery

Earth Wind Fire & Water
Pottery by Melanie

Victoria Stitched
Handmade stitched &
crocheted creations

Hand Made Goody's
Home fragrance
products

Nikki's
Re-cycled fabric &
ephemera gifts

Cotswold House of Cards
Handcrafted & bespoke
cards

Judy Higgins
Paintings & painted
items

Sallie Seymour
Cotswold Scenes art

Organised by Kempsford and Whelford PCC
Raising funds to support the church in the community and to improve facilities at our
churches for services, community events and celebrations.

Information via www.kempsford.net

KEMPSFORD PARISH COUNCIL

Clerk: Teresa Griffin, Winterwood, Whelford, Fairford, Glos. GL7 4EB

Tel: 01285 713691 Email: clerk@kempsfordparishcouncil.net

www.kempsfordparishcouncil.net

Parish Councillors	Email	Tel.
Mr Mark Strange (Chair)	markstrange@kempsfordparishcouncil.net	01285 810635
Mr John O'Connell (Vice-Chair)	johnoconnell@kempsfordparishcouncil.net	01285 810512
Mrs Christine Nugent	christinenugent@kempsfordparishcouncil.net	01285 810306
Mrs Karen Saunders	karensaunders@kempsfordparishcouncil.net	01285 713155
Mr Neil Green	neilgreen@kempsfordparishcouncil.net	07745193925
Mr Stephen Andrews	stephenandrews@kempsfordparishcouncil.net	01285 719924

PARISH COUNCIL MEETING DATES

The Parish Council meets monthly at Kempford Village Hall unless stated otherwise. Meetings are usually the third Tuesday in the month and start at 7.45pm. Everyone is welcome to attend and a period of time is designated for public participation.

The next meeting dates are -

Tuesday 17th October

Tuesday 21st November

Tuesday 12th December at Whelford Village Hall

NOVEMBER 2023 NEWSLETTER

Copy for the above Newsletter to Teresa Griffin by

MONDAY 23RD OCTOBER 2023 PLEASE

Email: clerk@kempsfordparishcouncil.net

PARISH COUNCIL NEWS

At the Village Fete in September, Chair of the Parish Council, Mark Strange presented Tony Williams with a long-service plaque following his retirement from the Parish Council.



Fairford to Lechlade Multi-use Path

For the last year or so, we have been working with our neighbouring councils at Fairford and Lechlade, together with Lakes by Yoo to identify and create a primarily off-road and safe multi-use path between Fairford and Lechlade, skirting around the edge of Whelford and our Parish.

A series of information boards showing what we consider to be deliverable will be displayed at The Lakes Bar & Kitchen at Bowmoor Sailing Lake over the next few weeks.

The boards include a FAQ's section and an opportunity to comment on the proposals.

An information board titled 'Welcome' for the Fairford to Lechlade Multi-use Path project. The board has a green header and footer. The main content is on a white background. It includes an 'INTRODUCTION' section with a map of the area showing the proposed path route between Fairford, Lechlade, and Whelford. The map is labeled with 'FAIRFORD', 'LECHLADE', 'WHELFORD', 'A417', and 'A36'. Below the map, there is a list of benefits and a list of deliverable sections. The board also features a 'THE LAKES by Yoo' logo and the text 'Fairford to Lechlade Multi-use Path'.

Temporary closure of footpath BKD at Manor Farm Quarry

Work is progressing well on the new bridge to enable backfill lorries to enter the quarry and speed up restoration. The footpath is expected to be re-opened mid-October. The barriers put in place by the construction team are there to keep pedestrians safe, and not to inconvenience people. Please do not remove them as you could put yourself and others at risk.



Temporary Road Closure—High Street, Kempston on 13th November 2023

A reminder that a short section of the High Street adjacent to the old Cross Tree Crescent will be closed on the 13th November between 9:30 and 15:30. A map and more information is available to view on the Parish Council website: www.kempstonparishcouncil.net

Hannington Road Closure

The Hannington Road continues to remain closed because of the damaged culverts. The repair of the culverts has been complicated by the need to establish exactly where a gas main runs along the edge of the road at a relatively shallow, by modern standards, depth. That has now been done using Ground Penetrating Radar but that work has now only served to confirm the challenge. Options remain very limited and are being discussed with Wales and West Utilities. No solution to the safe repair of the culverts has been agreed with the road remaining closed as we move toward Winter.

The Parish Council continues to press for the repairs to be completed as soon as possible with a clear timetable being provided as soon as agreement on how the repairs will be completed has been agreed.



Pye Homes planning application

You may have seen that the Pye Homes planning application for up to 35 dwellings at Kempsford was refused. We now wait to see if they appeal the decision. They have 6 months from the decision date within which to do this and there are various options open to them such as Public Enquiry and Informal Hearing. Watch this space!

Neighbourhood Development Plan

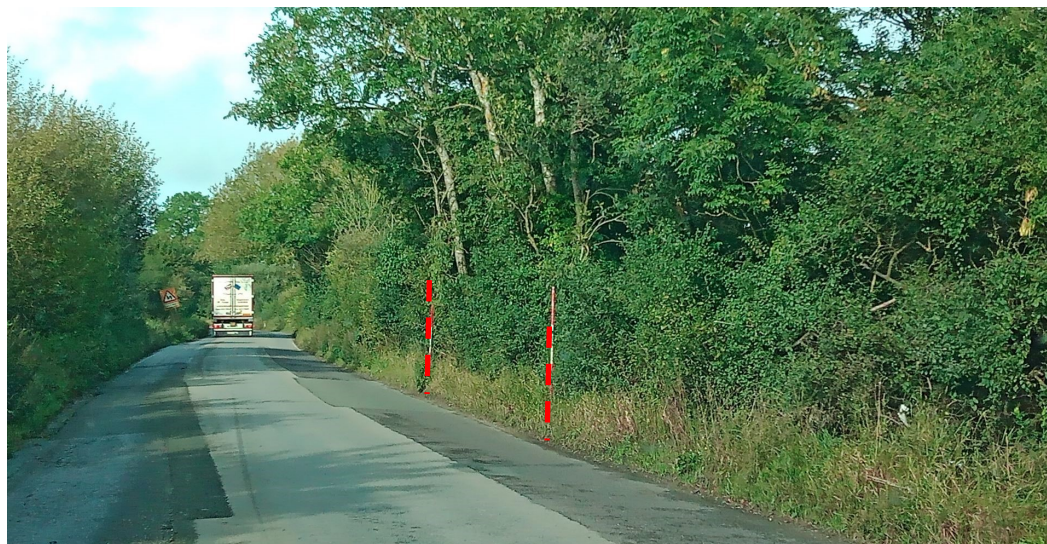
The recent Pye Homes planning application has strengthened our desire to undertake a Neighbourhood Development Plan (NDP). These plans set out the vision for an area and the planning policies for the use and development of land within your parish or Neighbourhood Area.

It is not something that can be done by the Parish Council alone, and requires a working party consisting of councillors and volunteers from the community. If you are interested in helping with this please contact any of the councillors or Clerk.

Quarry planning application for Former RAF Down Ampney Airfield & Surrounding Areas

At the time of writing, a Planning Committee Members Site Visit has taken place and the application is due to be decided later this week. Stephen Andrews attended the site visit on behalf of the Parish Council and will be speaking at the Committee Meeting later this week to object on our behalf.

Our main concern is roads and access, with the entrance proposed between the 2 sets of traffic lights at Eysey bends. The exact location is marked with stakes in this photograph .



Parish Councillor Vacancy

We still have a Parish Councillor vacancy to be filled by co-option.

If you are interested in joining our team, please contact the Clerk for further information.

Ever wanted to try an instrument but not sure which one's for you?

Then come along to our Try an Instrument Day! We will have a wide range of instruments for you to try along with an expert team of tutors to guide you. Open to children and adults of all ages.

Saturday 7th October, 10am - 12pm, Sir Thomas Rich's School

Register at: <https://orlo.uk/lyiwr>

gloucestershire
MUSIC
gloucestershire
MUSIC
gloucestershire
MUSIC

gloucestershire
MUSIC

Ever wanted to try an instrument but not sure which one is for you? Then come along to our

TRY AN INSTRUMENT DAY!

We will have a wide range of instruments for you to try along with an expert team of tutors to guide you.

Saturday 7th October, 10am - 12pm,
Sir Thomas Rich's School



Let us know you're coming at gloucestershiremusic.paritor.com

Open to children & adults of all ages.

T 01452 427242 W gloucestershiremusic.co.uk

Would you like to help people in your local community who are struggling?

Citizens Advice Stroud and Cotswold Districts needs volunteers now more than ever to help make a difference to local people. In the last year we have faced an unprecedented demand due to the cost-of-living crisis.

We are appealing for new volunteers from all backgrounds who are looking for a volunteering role that is both challenging and rewarding. We are looking for people who can give 8-10 hours per week, and are currently recruiting for the following roles:

Administration/Triage Assistants. You will provide a professional welcome to callers at the door of our Stroud or Cirencester offices. You will triage callers without an appointment - identifying emergencies and providing information and signposting to other agencies when needed (no advice giving involved). You will also undertake a wide range of administrative tasks, including contacting clients by telephone and text, and handling inward and outbound post.

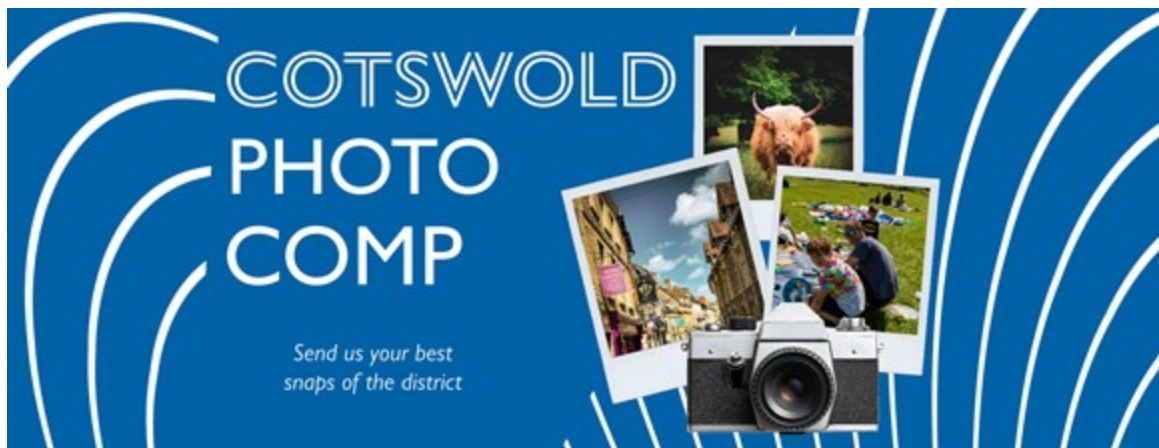
You must be computer literate but full training in triage and our IT systems will be given.

Volunteer Advisers. You will give advice and information (face to face, by telephone and email) to clients on a wide range of problems. No prior advice experience is necessary as full training will be given. Information sessions for volunteer advisers will take place on 18 October 2023 (2-3.30pm) in Stroud and on 8 November 2023 (1-2.30 pm) in Cirencester. Our next training programme will start on 24 January 2024.

Elizabeth Hall, our Chief Executive Officer said:

"Now more than ever, you can really make a difference by volunteering with us. We're seeing more and more people needing support as living costs spiral. As well as helping the local community, we know people who volunteer their time get a lot back. We'll give you all the training you need and would love to hear from you."

To find out more about these roles or register your interest for a volunteer adviser information session please contact our Learning and Development Officer at training@ca-scd.org.uk. You can also find further information on our website www.citizensadvice-stroudandcotswold.org.uk.



Residents invited to share their best snaps of the Cotswolds to showcase the district

Residents of Cotswold District Council are being invited to take part in a photo competition to help the council refresh the photographs within the public areas of the council buildings, website and other areas to show the district in its best light.

The competition will run from Thursday 7 September to Thursday 19 October and the council are looking for photos of the people and communities of the Cotswolds which make up the district, as well as photographs of the district's countryside, towns and villages.

Cabinet Member for Health, Leisure and Culture, Cllr Paul Hodgkinson said "This is a creative competition which anyone can get involved in. It's going to be a great opportunity to showcase the Cotswolds, as well as celebrate the communities and images which make the district what it is.

"We want anyone of any age or ability to enter this competition, whether you're an experienced photographer, just starting out in photography or take the odd snap on your phone.

"As a keen photographer myself I always appreciate the amazing pictures which people share on social media. We are asking residents to send their own images because they know our district best and we are sure will take photos that really capture the spirit of our unique area.

"The photos will replace the imagery we currently have and help bring some life back into the council buildings and website, showing off our area to all those who visit. Please be as creative as you like!"

The competition is open to all ages and abilities and the council are asking that residents be as creative as they like.

The photographs chosen by the judging panel will be printed and displayed in the council buildings, and include a credit to the winners. Those with the best photos will be entered into a prize draw with the best image winning a 60 x 40cm canvas of their winning image and a Cotswold Edition Monopoly Board and two runners up will win a Cotswold Edition Monopoly Board each.

For a chance to win entrants will need fill out the survey and upload their best snaps. To enter and view more information, including Terms and Conditions visit -

<https://www.cotswold.gov.uk/photocompetition/>



KEMPSFORD VILLAGE HALL CAFÉ
Thursday 12th October 12 – 2pm

Come and try our Homemade Soups and Breads
Delicious Cakes
Fresh Coffee and Speciality Teas

All welcome
If you haven't been before you're missing a treat!

The village hall committee would like to thank all those who supported the village fete in any way (held on 9th September) by volunteering, donating cakes or prizes or by turning up on the day. We raised the sum of £241.46 for the village hall funds to help enable us to put on other events for the village. In spite of the temperature I believe all those who attended enjoyed the event which was of course the main aim of the organisers.

Lechlade History Society

Lechlade History Society will be hosting our AGM on Monday November 20th in The Memorial Hall @ 7pm for a 7.30pm start

After the AGM we will be offering refreshments with wine and soft drinks followed by the entertaining talk on.....

"The History of Recorded Sound" by Patrick Furley, a very entertaining Gentleman who will also have old equipment to illustrate his talk

Whelford Village Hall

(Registered Charity No. 301648)

FREE fast broadband available to all Hirers

For bookings, contact Sue Griffin on 01285 712979 or email: 374croft@gmail.com



**Full fibre
broadband
is here**

Powered by
Gigaclear
You're clear for take-off

Kempsford Village Hall booking for the month

	Sunday	Mondays	Tuesdays	Wednesdays	Thursdays	Fridays	Saturdays
AM		10:00 - 11:00 Pilates Rona Bennett 01865 820754					
PM				17:00 - 18:15 18:15—19:30 Youth Club (Term time only)	12:00 - 14:00 Post Office Monthly Café (Café 2nd Thurs of the month)		
Evening			20:00 - 21:30 Village Hall Meeting (monthly, 2nd Tuesday)				
			19:45 - 21:45 Parish Council Meeting (monthly, 3rd Tuesday)				

KEMPSFORD VILLAGE HALL COMMITTEE MEMBERS

*Ian Housley, Chair

*Kathy Woodward, Secretary

*Andy Gray, Treasurer

Luke Fry, Joint Bookings Secretary

Molly Pekarik Fry, Joint Bookings Secretary

Karen Saunders, Parish Council Rep

Hannah Dickens

Jacquie Howlett

Cassie Vickery-Cummings

** Denotes Trustee*

To contact any Committee Member email infokempsfordvillagehall@kempsford.net

New members are always welcome!

The **Kempsford Village** Facebook Group is a great way to keep up to date with all events and news in the Parish



Kempsford Village



ST MARY'S KEMPSFORD WITH ST ANNE'S WHELDFORD

Contact details for the parish

Rev Kim Brown - 01285 810954 or revkimbrown10a@gmail.com

Lay Preacher – Rob Mitchell 01285 712821

Church wardens: Elizabeth Emberson dizzylizzie@sky.com

or Keith Howlett - 01285 712268 churchwarden@kempsford.net

or there is a Facebook page The 5 Villages

Autumn is upon us, with the leaves changing and swirling in the autumn gusts, though the summer sunshine offers us some welcome encores. I am a fan of wild swimming in a local river, but the temperature has dropped so suddenly in the early mornings it turns out I'm not as much of a cold-water swimmer as I thought I was! The vibrant colours lift us as the nights get darker and we have the joys of log fires, crumbles and Strictly to look forward to!

Thank you to everyone who performed, and all who attended the Musical Evening in the church recently. It was a wonderful, uplifting event, with complex organ and piano pieces that dazzled us, and moving songs to delight. Our thanks to Daniel Strange, son of Mark and Sally, who was the undoubted star of the show! At 25 years old, we hope he will have a long and illustrious musical career ahead of him. Thanks go to Sharon Elliott and Elizabeth Emberson, and to Peter Wolfenden, who all performed brilliantly. £500 was raised for the new loo in the church. We were so blessed to enjoy such a festival of home-grown talent!

We celebrated Harvest Festival recently, giving thanks for our food, our farmers, and the beauty all around us. The church is full of colourful flowers and vegetables, and we thank our school community for all their generous donations for the Foodbank. The decorations are still there, if you'd like to take a look.

Rev Catie is settling in well and hard at work in all our churches; Catie and Neil thank everyone who has sponsored them on their walks for the Trussell Trust in September. Catie and I will be saying morning prayers in church on Tuesday mornings at 9.30am on the following dates: Tues 3rd Oct; 10th Oct; 17th Oct; 24th Oct; 31st Oct; 7th Nov; 21st Nov; 28th Nov. Do come and join us for a peaceful start to the day, and let me know if there are any prayer requests for us to pray for.

The Long Table meal is set to re-start, with the first one on Monday 2nd October, and each first Monday in the month thereafter until March, if they prove popular. Our first menu is pasta bolognese with salad, followed by apple crumble. Come and eat with neighbours and friends; book in on 07714 998247. Let us know any dietary needs, and please bring some cash to donate, as you feel, for the food.

Save the date On Saturday 4th November the Advent craft fair will take place in the village hall, with homemade eats and beautiful items to buy, along with the raffle and Mystery Money Prize! Wishing you a beautiful and cosy autumn, with blessings Rev Kim.

**St Mary's, Kempford with St Anne's, Whelford
Church Services**

Sunday 1 October	9.30 am Kempford	Holy Communion
Sunday 8 October	9.30 am Kempford	Service of the Word
Sunday 15 October	9.30 am Whelford	Holy Communion
	4 pm Kempford	Family Service with baptisms
Sunday 22 October	9.30 am Kempford	Holy Communion
Sunday 29 October	9.30 am Five Villages service	Castle Eaton
Monday 30 October	7 pm Kempford	All Souls Service

Morning Prayer is said every Tuesday at 9.30am in St Mary's, Kempford
St Mary's is now open every day for prayer and reflection and St Anne's is open on Fridays.

Food Bank

Thank you for the generous offerings of food stuffs last month for Harvest. We continue to collect donations for the food bank. Boxes are in place outside both St Mary's and St Anne's in the porches and are emptied regularly and the contents taken up to Cirencester to the warehouse.

Particularly needed are long life fruit juice, vegetarian foodstuffs, tinned veg, tinned tomatoes, tinned fruit, long life milk, tinned sponge puddings and custard.

Baby formula, medicines and dietary supplements cannot be accepted.

At the moment they have plenty of baked beans, pasta, rice and soup.

The Long Table

The Long Table meal is set to re-start, with the first one on Monday 2nd October.

Future dates are as follows and all start at 5:15pm - 7pm –

Mon 6th Nov

Mon 4th Dec

Mon 8th Jan 24

Mon 5th Feb

Mon 4th March



Friends of Fairford and Lechlade
Communities

Registered Charity Number: 1180059



**FRIENDS OF FAIRFORD AND
LECHLADE COMMUNITIES**

QUIZ & CHILLI NIGHT

Round up a team for
an evening of fun!

Friday
20th Oct

Fairford Community
Centre
Doors open at 7:00pm
Quiz starts 7:30pm

£10
per person
(includes
Chilli)

Teams of
6 - 8



To register or for further information
please email

admin@friendsoffairford.org.uk

www.friendsoffairford.org.uk





FRIENDS OF FAIRFORD & LECHLADE COMMUNITIES

Serving Fairford, Lechlade and the surrounding villages.



News and Information from your Community Friends

DATES FOR YOUR DIARY

Join us on **Saturday 7th October 19:00** for a Fundraising Restaurant Night at the Trout Inn, Lechlade. £26 for a main and desert, drinks not included. To book or for the menu choices, call 07540 798 226 (Transport line) or 01367 252706 (Ruth), or email transport@friendsoffairford.org.uk

Our next Quiz and Chilli Night will be on **Friday 20th October at Fairford Community Centre (doors 7pm, quiz starts 7:30pm)**, £10 per head, includes meal. Tables of 6 – 8. Please book by email to admin@friendsoffairford.org.uk.

Our festive event will be a Wine Tasting Evening and the annual raffle draw on **Saturday 25th November, 7:30pm** at Fairford Community Centre. More details TBC and will be confirmed on our website or contact admin@friendsoffairford.org.uk.

STAFF VACANCY: ADMINISTRATOR

We are hiring for an Administrator. This is a paid role, 5-7 hours a week. For more information, please see the details on our website or get in touch with Kerry on admin@friendsoffairford.org.uk.

VOLUNTEER VACANCIES: TRUSTEES

Can you help us in the governance of the charity? We are seeking new Trustees to take on the Chair and Vice Chair roles, and for Trustees to take responsibility for various Subcommittees. For more information or to discuss, please contact Shelley on chair@friendsoffairford.org.uk

CHARITY RECIPE BOOK

Want to see your name in print? We're creating a Community Recipe Book! We'd love submissions of your favourite personal and 'secret' family recipes (images welcome too!). Books will be available to purchase before the end of the year. Please send submissions to Kerry at admin@friendsoffairford.org.uk

EDNA DAWES LUNCH CLUB

Our much-loved Edna Dawes Lunch Club meets on Wednesday and provides a hot meal, activities and social interaction for isolated elderly people. Transport can be provided. We would appreciate more volunteers - please do get in touch with Katie our Lunch Club Team Leader if you can help:

edlc@friendsoffairford.org.uk / 07713 607106.

PATIENT TRANSPORT SERVICE

Our volunteer car service vital service is a lifeline to many and our wonderful volunteer drivers provide a personal service for a very low cost. There is a small fee to cover the volunteer's fuel and running costs. We would welcome more volunteers, please do get in touch if you can assist.

To arrange a journey or if you think you can help people get to their medical appointments, please get in touch with Val on transport@friendsoffairford.org.uk / 07540 798226.

BEREAVEMENT CAFE

We continue to run our Bereavement Café on the first Friday of every month, for people who have suffered a loss and would like to talk. Our nursing team will be present to welcome you with a hot drink and some refreshments. Please do drop in, between 10:00 and 12:00 at The Barker Room, Fairford Community Centre. If you have any questions, please call 07938244335 or email admin@friendsoffairford.org.uk

HOW TO CONTACT US

Chair: Shelley	chair@friendsoffairford.org.uk	
General Manager: Kelly	gm@friendsoffairford.org.uk	
Administrator: Kerry	admin@friendsoffairford.org.uk	01285 707300
Patient Transport: Val	transport@friendsoffairford.org.uk	07540 798226
Nursing Team: Emma and Jan	nursing@friendsoffairford.org.uk	07938 244335
Charity Shop: Linda	shop@friendsoffairford.org.uk	01367 252189
Edna Dawes Lunch Club: Katie	edlc@friendsoffairford.org.uk	07713 607106
Website	www.friendsoffairford.org.uk	

HOW TO DONATE

If you would like to make a donation you can do so online through our website www.friendsoffairford.org.uk or by sending cheques made out to 'Friends of Fairford' and posting to Friends of Fairford & Lechlade Communities Charity Shop, Lloyds Chambers, High Street, Lechlade, Glos GL7 3AE. If you are able, we'd really appreciate it if you could complete a Gift Aid Declaration so we can claim an additional 25% of your donation from HMRC. Forms can be found on our website.

Information on what we do can be found on our website www.friendsoffairford.org.uk and the names of our existing team of trustees are listed on the Charity Commission's website.

Friends of Fairford & Lechlade Communities (Reg. Charity No. 1180059)



Kempsford Community Garden

The next working parties are to be held on **Saturday 21st October** in the garden behind Kempford village hall between 1:30pm and 4pm.

Please come along with your tools and help us develop the space into a beautiful and productive garden. In the next session we will be preparing the ground for a flower border so it can be planted up after the Plant Swap & Sale.

We have been donated brick Pavers for the patio area but are looking for a man with access to a minidigger to help us with this project. Can you help?

If you have any garden tools which you no longer need and are willing to donate please contact either Kathy Woodward on 07821540088 or Jacqui Howlett on 01285 712268

Donations of home-made jams and chutneys would be most welcome for the Autumn Plant Swap & Sale. Also any books on gardening which you no longer want.

Please contact Jacqui Howlett on 01285 712268 to arrange a collection.

Design a Logo Competition for the Community Garden

Thank you to all those who entered the competition to design a logo for the Community Garden.

Prizes were awarded to

Freya Tyson, Evie Grace and Hanna Cummings



Kempsford Community Gardeners



Autumn
Plant
Swap & Sale



At Kempford Village Hall
Saturday 14th October,
12am—4pm

Swap your excess garden plants with others or
donate them for us to sell (seedlings, transplants etc)
Plants may be dropped off from 11am, please label them.

Buy new plants for your garden
Refreshments available



AUTUMN CONCERT

MULTI AWARD-WINNING CHOIR

THE WESSEX

WITH SPECIAL GUEST

LUCY MAY BARKER

AND

CIRENCESTER MALE VOICE CHOIR

CIRENCESTER PARISH CHURCH
SATURDAY, OCTOBER 14 AT 7.30PM

DOORS OPEN AT 7 PM

TICKETS £10
UNDER 16s FREE

IN SUPPORT OF



TICKETS AVAILABLE AT
BINGHAM HOUSE, 1 DYER STREET
AND ON THE DOOR

OR ONLINE AT www.cmvctickets.co.uk

Simple ways to feel a little better



We support adults in Gloucestershire living with a life-limiting illness and provide support for their loved ones, carers, and those bereaved. Whether you are living with a life-limiting condition or have recently been diagnosed with one - we're here to support you.

We offer a range of individual and group sessions to help you manage symptoms, look after yourself emotionally and physically, and take control of your life again.


Call us on 01453 733706 or
email wellbeing@longfield.org.uk
to find out more. All sessions
are free of charge.



LONGFIELD
Community Hospice

What's On at Longfield Wellbeing Centre (Updated 20/09/23)



MONDAY	TUESDAY	WEDNESDAY	THURSDAY	FRIDAY
<p>MOVE MORE 1.45pm - 3.30pm (Patients)</p> <p>MINDSONG (Fortnightly) 2.00pm - 3.30pm (Patients & Carers)</p>	<p>CREATIVE SPACE 10.30am - 12.30pm (Patient & Carers) LUNCH AVAILABLE</p> <p>BEREAVEMENT SUPPORT GROUP 10.30am - 12.30pm (Bereaved only) LUNCH AVAILABLE</p> <p>TAI CHI MOVEMENTS FOR WELLBEING 2.00pm - 3.00pm (Patients & Carers)</p> <p>BEREAVEMENT FRIENDSHIP CAFÉ (Monthly) 2.30pm - 4.30pm (Bereaved Only)</p> <p>COOKING FOR INSPIRATION 3.00pm - 5.30pm (Patients)</p>	<p>MEN'S GROUP (Fortnightly) 10.00am - 12.00pm (Patients, Carers & Bereaved) LUNCH AVAILABLE</p> <p>FORK & TALK 10.30am - 12.30pm (Carers & Bereaved) LUNCH AVAILABLE</p> <p>CARERS CAFÉ (Monthly) 1.30pm - 3.30pm (Carers Only)</p> <p>BEING IN NATURE (Fortnightly) 1.30pm - 3.00pm (Patients & Carers)</p> <p>LIVING WELL WITH FATIGUE & BREATHLESSNESS 2.00pm - 4.00pm (Patients)</p> <p>COOKING FOR INSPIRATION 3.00pm - 5.30pm (Carers & Bereaved)</p>	<p>MY GRIEVE JOURNEY THROUGH LARI 10.00am - 12.00pm (Bereaved Only) LUNCH AVAILABLE</p> <p>CREATIVE WRITING 10.30am - 12.30pm (Patients & Carers) LUNCH AVAILABLE</p> <p>RELAXATION GROUP 2.00pm - 3.00pm (Patients & Carers)</p> <p>NORDIC WALKING 1.30pm - 3.00pm (Patients & Carers)</p>	<p>DROP IN SESSION 10.00am - 12.00pm</p>
 <p>LONGFIELD Community Hospice</p>				
<p>Burleigh Lane Minchinhampton Gloucestershire GL5 2PQ Registered Charity No. 298627</p>				
<p>TO BOOK OR FIND OUT MORE Please ring 01453 733706 or email wellbeing@longfield.org.uk</p>				
<p>We also offer Counselling & Complementary Therapy sessions.</p>				



LONGFIELD Community Hospice

Did you Know?

Longfield Community Hospice is here for the people of Gloucestershire.

We rely on public support for over

85%

of our income every year.

 www.longfield.org.uk

 01453 886868

Access our Wellbeing Centre services

 01453 886868

 wellbeing@longfield.org.uk

Make a referral to Hospice at Home

 01453 886868

 careservices@longfield.org.uk

Donate or fundraise for us

 01453 886868

 fundraising@longfield.org.uk

Volunteer with us

 01453 886868

 volunteering@longfield.org.uk



Approved by
**FUNDRAISING
REGULATOR**

Registered Charity No. 298627

Registered Company No. 02213662

Speak to our shops team

 01453 886868

 shops@longfield.org.uk

Speak to our warehouse team

 01453 836715

 logistics@longfield.org.uk

Find us

Longfield Community Hospice,
Burleigh Lane,
Minchinhampton,
Gloucestershire, GL5 2PQ

What three words: usage.socccerunframed

Follow us at

 [@longfieldcare](https://twitter.com/longfieldcare)

 [@LongfieldHospice](https://www.facebook.com/LongfieldHospice)

 [@longfield_care](https://www.instagram.com/longfield_care)

Short Mat Bowls

With reference to last month's request to find out if there was any interest in SMB, I had 5 emails which is obviously not enough to warrant the expenditure on the equipment. So I thought I would give it one more go to see if there might be any interest in Kempsford, Dunfield, Dudgrove or Whelford, from either gender. If so please email me agray311@btinternet.com

Should I get more response I will take it forward to the Kempsford Village Hall committee to request a weekly spot in the calendar, to sort out the purchasing of equipment and inform those who have responded.

If again there is little response I will advise next month.

LOGS FOR SALE

The Cotswold Canals Trust provides a delivery service of seasoned Ash logs for wood burners and open fires

Delivery is available within a 16 mile radius of Driffield

The Trust is a charity and exists to progress the restoration of the Cotswold canals. If you support this ambition, or would just like some logs, please visit

www.cotswoldcanals.org/support-us/log-sales

or call 01453 752568 for details

Your support will directly help the restoration of the Thames and Severn Canal and Stroudwater Navigation



Cotswold Canals Trust

Working Safely for Restoration

Village Organisations & Useful Contacts

Vicar	Rev Kim Brown	revkimbrown10a@gmail.com	01285 810954
Church Wardens	Keith Howlett	churchwarden@kempsford.net	01285 712268
	Elizabeth Emberson	dizzylizzy@sky.com	
Church Choir	Mrs Cathy Stanford		713033
Church Bells	Iris Lewis		810770
Kempsford School		admin@kempsford.gloucs.sch.uk	810367
Chairman of School Governors	Darren Jeffrey	chair@kempsford.gloucs.sch.uk	810875
Farmors School	Mr Matthew Evans (Head)		712302
Kempsford Village Hall Bookings	Luke Fry	villagehallbookings@kempsford.net	
Whelford Village Hall & bookings	Sue Griffin	374croft@gmail.com	712979
Kempsford Brownies	Now closed	https://www.girlguiding.org.uk/	
Cricket	Anthony Axel-Berg		07766222951
Royal British Legion	Mr A Hill		810035
Scottish & Southern Electricity		Reporting of power cuts	105 0800 072 7282
Thames Water			0800 316 9800
Non-emergency Police Contact			101
NHS 111 Service		(when less urgent than 999)	111
Environment Agency	Floodline—0845 9881188	General Enquiries -	03708 506 506
Bulk Refuse	(phone to book)		01285 623000
Highway Matters & Street Light Faults	GLOUCESTERSHIRE	highways@gloucestershire.gov.uk	08000 514 514
	WILTSHIRE	northernhighways@wiltshire.gov.uk	0300 456 0105
Kempsford Hand Bell Team (Beaubells)	Iris Lewis		01285 810770
Cotswold District Councillors	Clare Muir Helene Mansilla	clare.muir@cotswold.gov.uk helene.mansilla@cotswold.gov.uk	
Cotswold District Council			623000
Gloucestershire County Council			01452 425000
		Out of hours <u>Social Care issues only</u>	01452 614194
Gloucestershire County Councillor	Mr Dom Morris	Dominic.morris@gloucestershire.gov.uk	07500894702
Constituency MP	Sir Geoffrey Clifton Brown	cliftonbrowng@parliament.uk	01242 514551
Parish Council Clerk (see Parish Council page for Councillors)	Mrs Teresa Griffin	teresagriffin@kempsfordparish Council.net	0781 8626158
Newsletter items	Mrs Teresa Griffin	As above	0781 8626158
Kempsford Website		www.kempsford.net	
Kempsford Parish Council Website		www.kempsfordparishcouncil.net	

Kempsford

Online



'Kempsford Village'
'Kempsford Mums & Dads'